

//////SCANNING PROTOCOLS//////

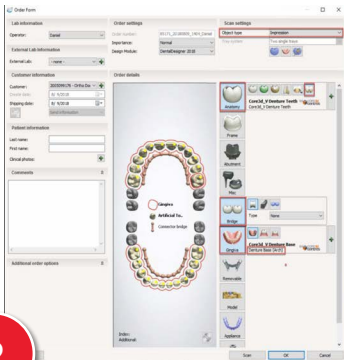
1



1. Occlude both arches then use a hot glue gun on the lingual surface to set bite

1. Mount occluded arches to plate

2



2. While setting up your 3Shape Order form; highlight the second molar to second molar if a full occlusal table is needed

1. 3Shape will prompt you to scan Maxillary Arch

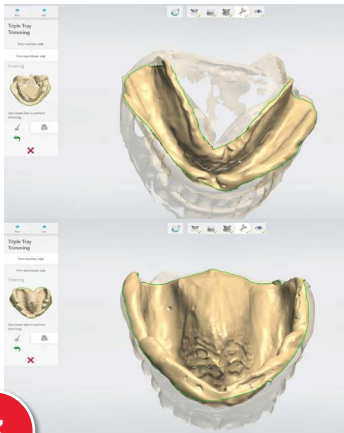
2. If any red areas are visible on your scan, use the adaptive scanning tool and highlight all of the red areas and re-scan those zones

3. 3Shape will then prompt you to scan the Mandibular Arch. Flip the arch and begin scanning

4. Once the Mandibular Arch scan is complete, you must scan the bite. Nothing additional is needed with these arches, proceed with the next scan

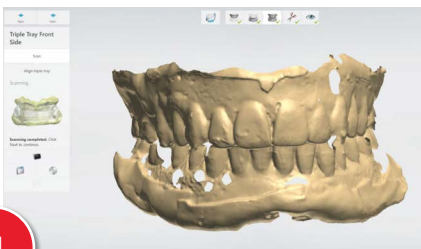
5. Complete the three point alignment to ensure the arches are aligned correctly

3



3. The final step is trimming the scan data

4



4. The scan data can then be uploaded to Henry Schein Prosthetic Design Services for designing